

Tēbing

@ Bandar Dato' Onn

Come home to
 **BandarDato'Onn**
Johor Bahru
A Jewel OF ISKANDAR MALAYSIA...



PROJECT DESCRIPTIONS

Bandar Dato' Onn is a suburb in Johor Bahru, Johor, Malaysia. Bandar Dato' Onn was developed by Johor Land Berhad, which is located in the heart of Iskandar Malaysia. It will transform the city of Johor Bahru into a world-class city which in turn will boost the property market in Johor. It was officially launched by Education Minister Datuk Seri Hishammudin Tun Hussein.

When fully completed, the suburb will house 90,000 residents spread across 19 neighborhoods. It was built to provide modern, beautiful and comfortable surroundings for the people. The location very strategic along Tebrau Corridor and will be connected to the Iskandar Puteri New Administration Centre, Senai International Airport, North-South Highway (NSE) and Dato' Onn Interchange. 12 KM from Johor Bahru.

Mixed housing and commercial development. 9 neighbourhoods and each neighbourhood measuring 60 acres. 1,474 acres total land area.

8 phases have been completed with total units of 4,500 residential and commercial units including double storey terraced, semi-detached houses and high rise affordable homes, along with commercial and institutional properties.

SMART INITIATIVES IN BANDAR DATO' ONN



LAYOUT PLAN

Tebing @ BDO

The crown jewel of Bandar Dato' Onn, Tebing @ BDO is every outdoor lover's paradise which comes equipped with a stunning waterfront public food and recreational park - ideal for families and communities to make precious and evergreen memories together.

Location: Bandar Dato' Onn

Land Size: 23 acres

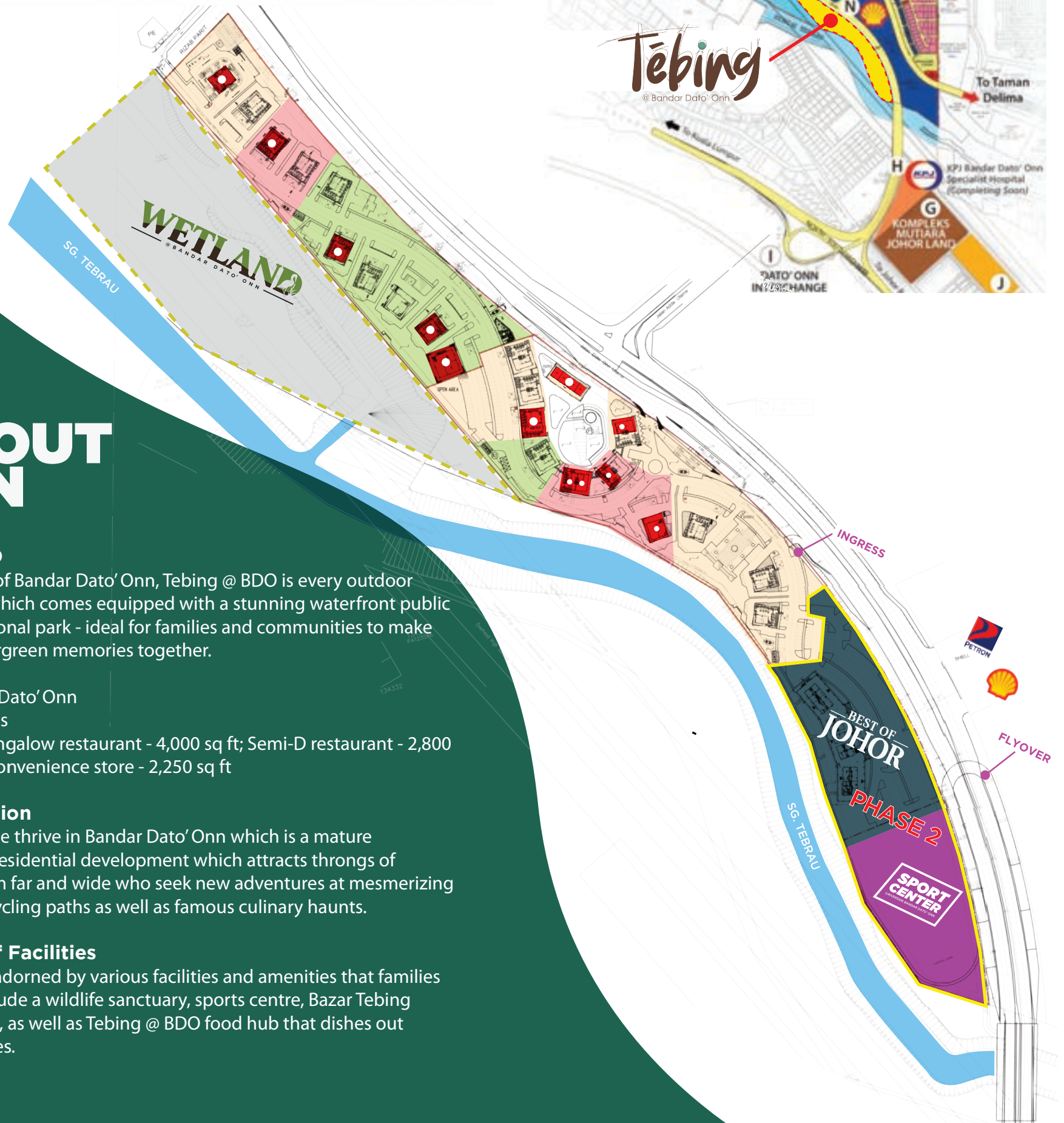
Built-Up Area: Bungalow restaurant - 4,000 sq ft; Semi-D restaurant - 2,800 sq ft; Bungalow convenience store - 2,250 sq ft

Thriving Location

Let your enterprise thrive in Bandar Dato' Onn which is a mature commercial and residential development which attracts throngs of communities from far and wide who seek new adventures at mesmerizing pedestrian and cycling paths as well as famous culinary haunts.

A Spectacle of Facilities

Tebing @ BDO is adorned by various facilities and amenities that families desire, which include a wildlife sanctuary, sports centre, Bazar Tebing Bandar Dato' Onn, as well as Tebing @ BDO food hub that dishes out delectable cuisines.



BUNGALOW RESTAURANT

Total : 4,000sqft

Ground Floor Plan

Indoor Dining : 88.21 sqm
Kitchen & Service Counter : 60.72 sqm
Outdoor Dining : 96.60 sqm

1st Floor Plan

Indoor Dining : 81.60 sqm
Outdoor Dining : 45.15 sqm
Toilet : 5.40 sqm



SEMI-D RESTAURANT

Total : 2,800sqft

Ground Floor Plan

Indoor Dining : 60.98 sqm
Kitchen & Service Counter : 34.96 sqm
Outdoor Dining : 76.14 sqm

1st Floor Plan

Indoor Dining : 49.26 sqm
Outdoor Dining : 36.60 sqm
Toilet : 3.00 sqm



Bungalow Unit : 13 Units
Semi-D Unit : 14 Units
Terrace Shop : 4 Units
R-Kiosk : 6 Units

BUNGALOW CONVINIENCE STORE

Total : 2,250sqft

Ground Floor Plan

ATM Machine Area : 22.50 sqm
Store : 157.5 sqm
Corridor : 164.36 sqm



BEST OF JOHOR

@RIVERSIDE BANDAR DATO'ONN

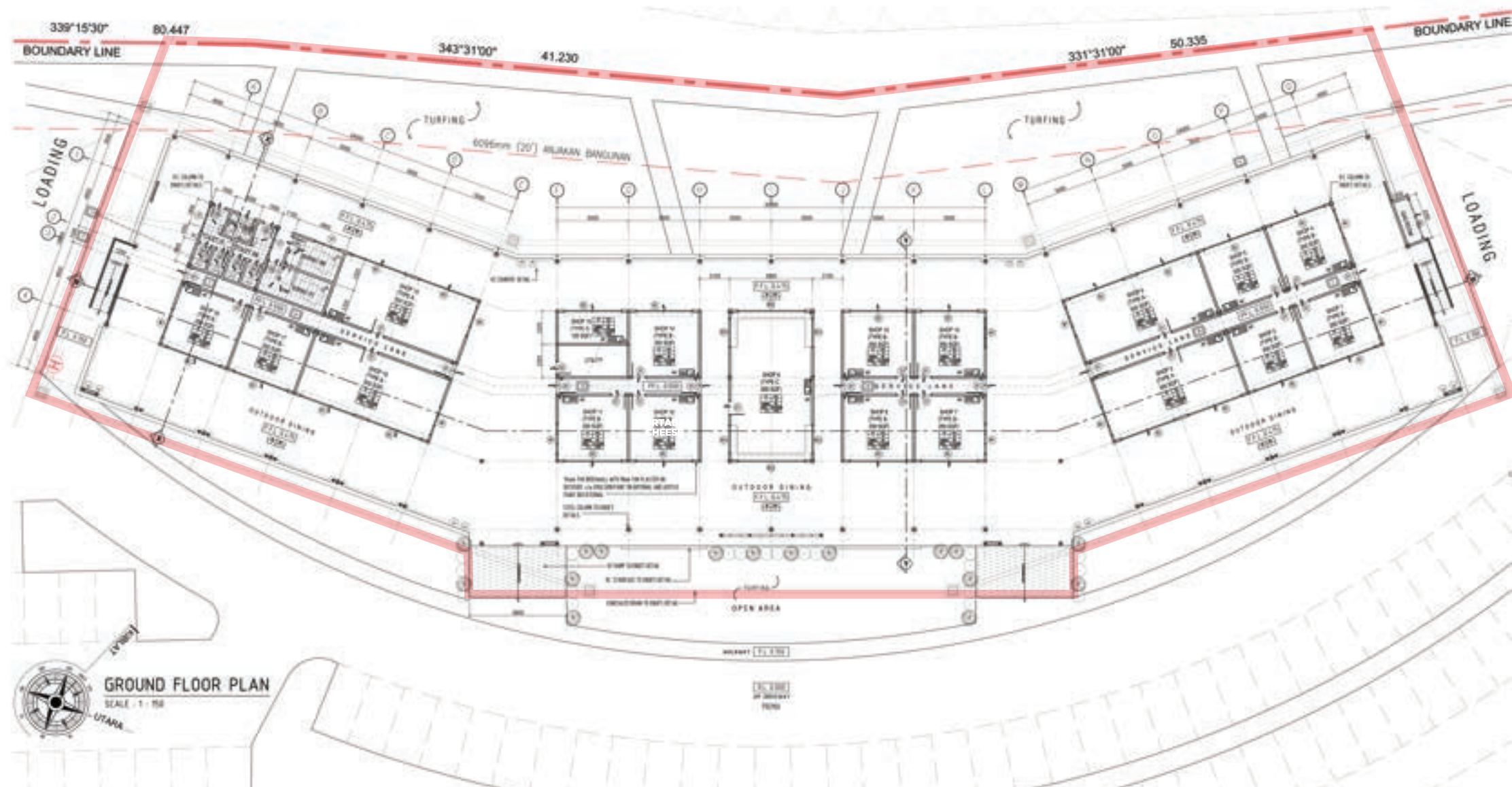




— BEST OF —
JOHOR
@RIVERSIDE BANDAR DATO' ONN



BEST OF
JOHOR
@RIVERSIDE BANDAR DATO' ONN



THE BEST OF JOHOR - RM6.00 - RM7.00 per sqft

Legend: ■ OCCUPIED ■ VACANT ■ BOJ AREA



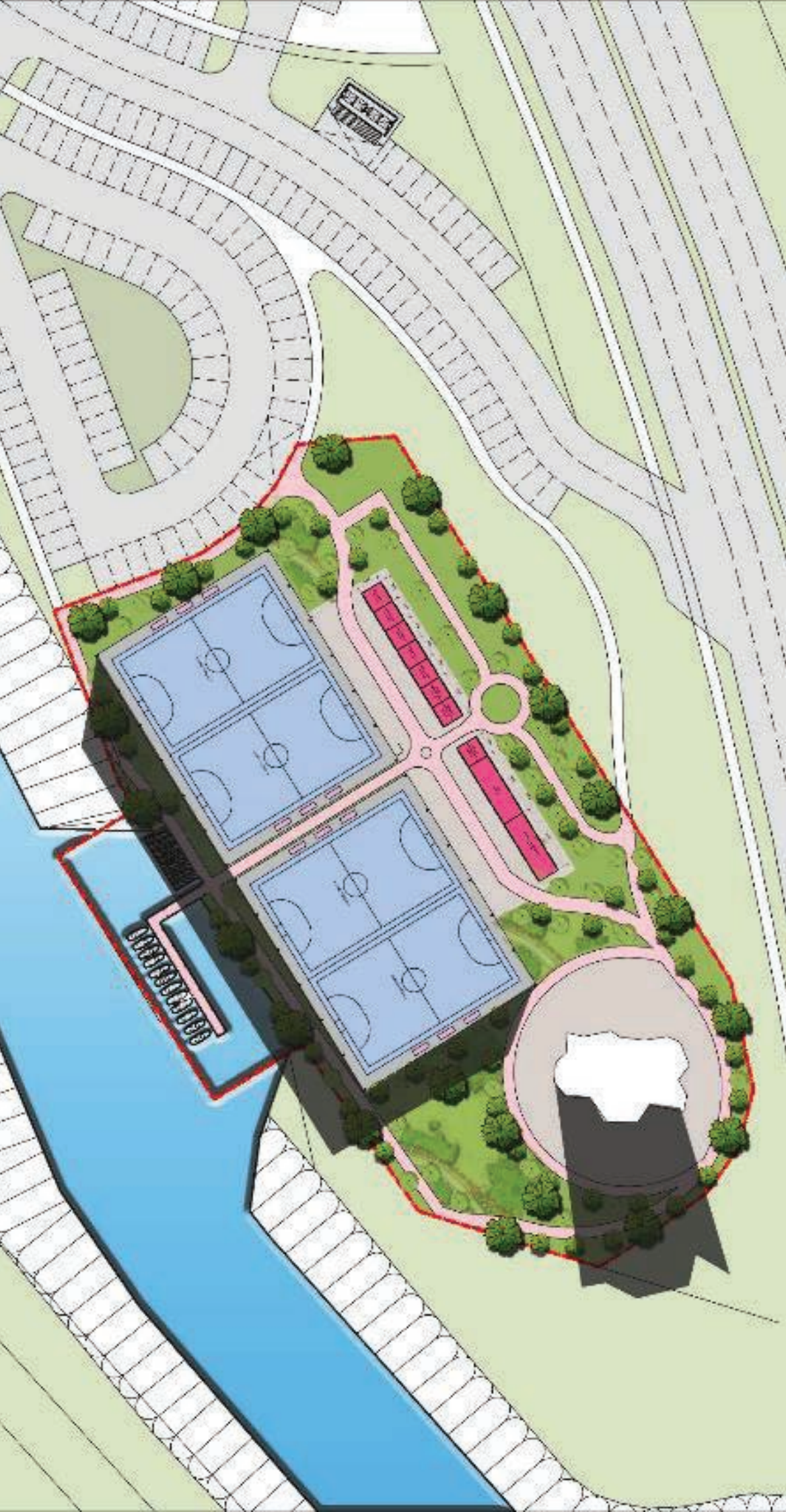


SPORT CENTER BDO RIVERSIDE

***SPORT
CENTER***

@RIVERSIDE BANDAR DATO' ONN





SPORT CENTER

@RIVERSIDE BANDAR DATO' ONN

Built on a 1.52 acres site, the Sports Centre gives us an opportunity to open up to the public programmed especially for the nearby community.

The Sports Centre will accommodate 4 futsal court and offering adaptable playing space for a range of sports and fitness), gym, & rock climbing, sports equipment store and café. The Sports Centre, located just next to The Riverside Bandar Dato' Onn, will be the access gateway to all sports practitioners, with ample car parking facilities, peaceful landscape including designated disabled and parent and child spaces.





WETLAND

@ BANDAR DATO' ONN





WETLAND

@ B A N D A R D A T O ' O N N

Wetland @Bandar Dato 'Onn Johor Bahru is an area developed in wetlands on the banks of the Tebrau River. This Wetland Park covers an area of 8 acres from part of the development of Riverside Bandar Dato' Onn. Wetland @Bandar Dato 'Onn Johor Bahru is a wildlife sanctuary that attracts many types of animals to the combined wet-aquatic soil environment.

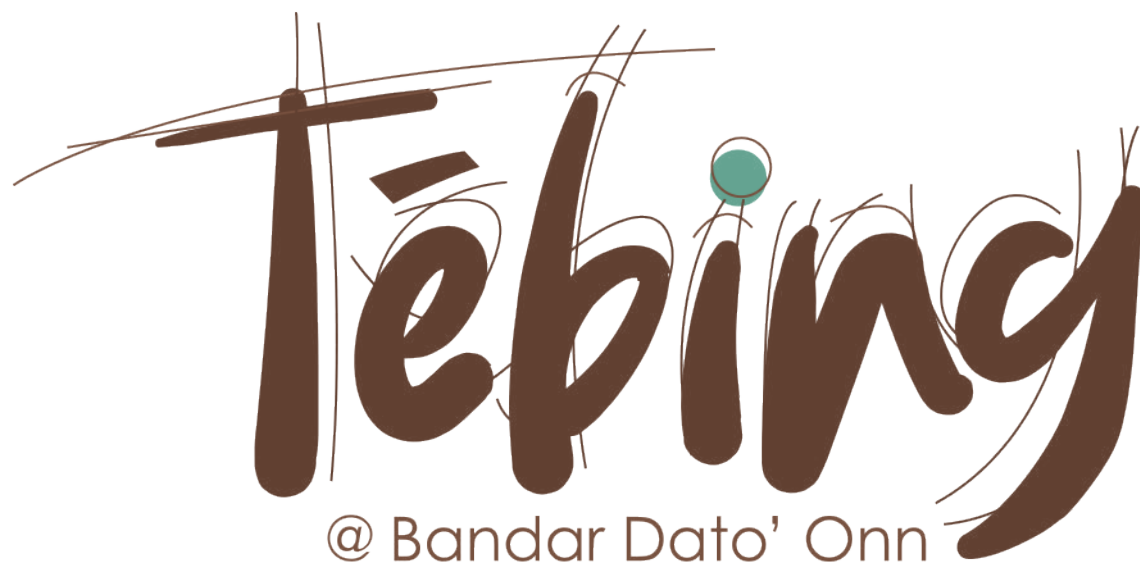
Beavers and several species of local swamp and waterfowl including small herons, small green herons and migratory birds have also been seen there. Apart from animals, insects and birds, Wetland @Bandar Dato 'Onn Johor Bahru will also be used as a protection area for historical trees, medicinal plants, herbs in cooking and as a research, information and learning area. This place is also imagined as a place for visitors to get to know wildlife and natural life for the education of children and nature lovers. This construction is one of the largest park projects by Johor Land Berhad for the benefit of the community and the local community.





LEGEND

1. GRATING PLATFORM
2. ENTRANCE TO WETLAND
3. STONE WETLAND CROSSING
4. WOODEN DECKING PLATFORM
5. (GPT (GROSS POLLUTANT TRAP)
6. SUNGAI TEBRAU



  **tebingbdo**

A Project Development By Johor Land Berhad

For more info, please call us :

+607 356 4888 | +6012 955 7069 | +6019 730 2227
johorland@jland.com.my