



Come home to

Bandar Dato' Onn

Johor Bahru

A Jewel OF
ISKANDAR MALAYSIA...

Neighbourhood

9

Guarded Neighbourhood

FREEHOLD

PHASE 1

KPJ BANDAR DATO' ONN SPECIALIST HOSPITAL

SALES GALLERY

B'ONN HILL VILLAS

MALAYSIAN COLLEGE OF HOSPITALITY & MANAGEMENT

SULTAN ISKANDAR MOSQUE

POLICE STATION

FAIRVIEW INTERNATIONAL SCHOOL

NEIGHBOURHOOD 12

NEIGHBOURHOOD 11

NEIGHBOURHOOD 10

COMMERCIAL PARK

NEIGHBOURHOOD 15



COMMERCIAL
CENTRE

AEON
MALL

FUTURE
DEVELOPMENT

SHOW VILLAGE

Neighbourhood

9

Guarded Neighbourhood
FREEHOLD

Bandar Dato' Onn a prestigious creation by Johor Land that epitomizes a township with new urbane lifestyle within meticulously designed residential and commercial space that is close to everything that matters. Spanning 1,514 acres Bandar Dato' Onn is a haven of safety and security, comfort and accessibility, recreation and networking.

The homes we build are a pride to own and assets that will only appreciate in value. The township is well-connected and self-contained with efficient infrastructures and community-related facilities, within a tightly secured community of 90,000 residents. It sits within Johor Bahru's important routes-alongside the North-South Highway that is accessible to the city's main eastern and western trunk routes and is only 12 kilometres from the city centre.

What sets Johor Land's development projects apart is our concern for quality and design that marries form with function, creating living and working spaces that provide peace of mind and a lull for the senses within lush tropical confines.



LEGEND

- 40' x 80' SEMI DETACHED
- 20' x 70' TERRACE
- 24' x 70' TERRACE
- 26' x 70' TERRACE

A *amelia 1*
20' x 70' | 2 STOREY
Built-up area: 1,742 sf | TERRACE HOUSE

B *amelia 2*
20' x 70' | 2 STOREY
Built-up area: 1,744 sf | TERRACE HOUSE

C *clover 1*
24' x 70' | 2 STOREY
Built-up area: 2,073 sf | TERRACE HOUSE

D *clover 2*
24' x 70' | 2 STOREY
Built-up area: 2,124 sf | TERRACE HOUSE

E *evelyn 1*
40' x 80' | 2 STOREY
Built-up area: 3,245 sf | SEMI DETACHED

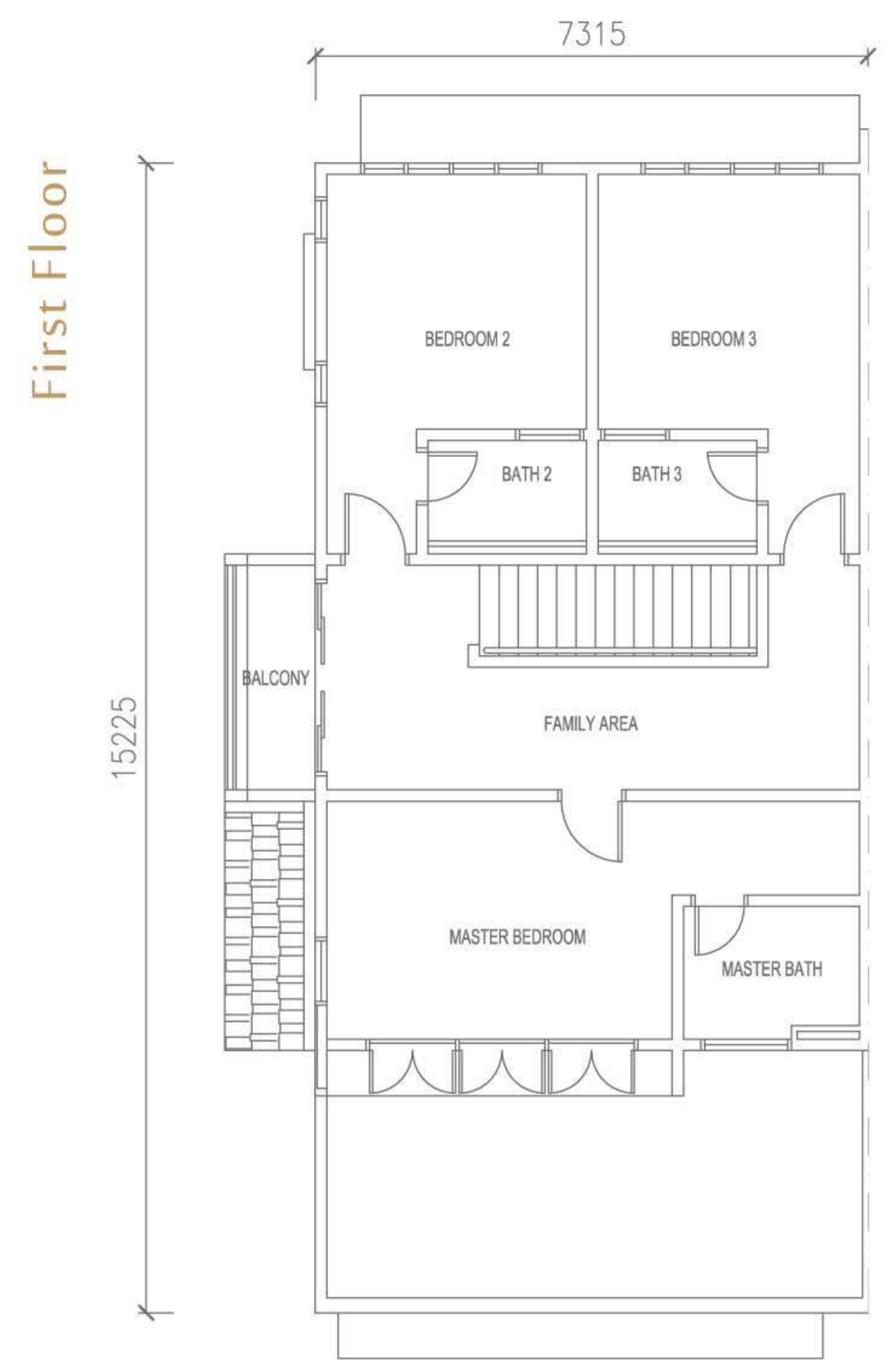
ENCLAVE *Neighbourhood*



clover 2

24' x 70' | 2 STOREY
Built-up area: | TERRACE
2,124 sf | HOUSE





FLOOR PLAN & SPECIFICATION

STRUCTURE	Reinforced Concrete
WALL	Clay Bricks
ROOF COVERING	Clay Tiles , Reinforced Concrete Flat Roof
ROOF FRAMING	Steel
CEILING	Skim Coat, Plaster Ceiling , Non Asbestos Ceiling
WINDOWS	Aluminium Frame Glass Window
DOORS	Solid Timber Door Solid 'Engineered' Timber Door Solid 'Engineered' Timber Door with Top Hung Glass Above Aluminium Framed Sliding Door with Top Hung Glass Above Solid 'Engineered' Timber Door with Fixed Louvres
IRONMONGERY	Lever , Knob
WALL FINISHES	
Kitchen	2100mm Height Ceramic Tiles & Emulsion Paint
Master Bathroom & 4	Ceiling Height Porcelain Tiles
Bath 2, & 3	Ceiling Height Porcelain Tiles
Bin Compartment	Ceramic Tiles
Others	Plaster & Emulsion Paint
FLOOR FINISHES	
Living	Porcelain Tiles
Dining	Porcelain Tiles
Kitchen	Porcelain Tiles
Staircase	Porcelain Tiles
Family Area	Porcelain Tiles
Master Bedroom	Porcelain Tiles
Bedroom 2 & 3	Porcelain Tiles
Guest Room	Porcelain Tiles
Master Bathroom	Porcelain Tiles
Bath 2, 3 & 4	Porcelain Tiles
Terrace & Balcony (Corner & End Unit)	Porcelain Tiles
Car Porch	Porcelain Tiles
Driveway	Cement Render
Utility	Cement Render
Yard	Cement Render
Bin Compartment	Ceramic Tiles

clover2

2 Storey Terrace House | 24' x 70'

PLUMBING AND SANITARY FITTINGS

Bathroom	Water Closet , Wash Hand Basin , Tissue Holder, Shower Rose , Soap Holder, Hand Bidet
Kitchen	Stainless Steel Sink , Kitchen Tap
Refuse Bin	Bip Tap
Yard	Bib Tap

ELECTRICAL INSTALLATION

	CORNER UNIT	INTERMEDIATE UNIT	END UNIT
Lighting Point	33	31	33
Socket Point	24	24	24
Fan Point	7	7	7
TV Antenna Point	3	3	3
Air-Cond Point	4	4	4
Water Heater Point	1	1	1
Bell Point	1	1	1
Power Auto Gate Point	2	2	2
Isolator Point	1	-	-

INTERNAL TELECOMMUNICATION TRUNKING CABLING AND SUPPLY

FENCING

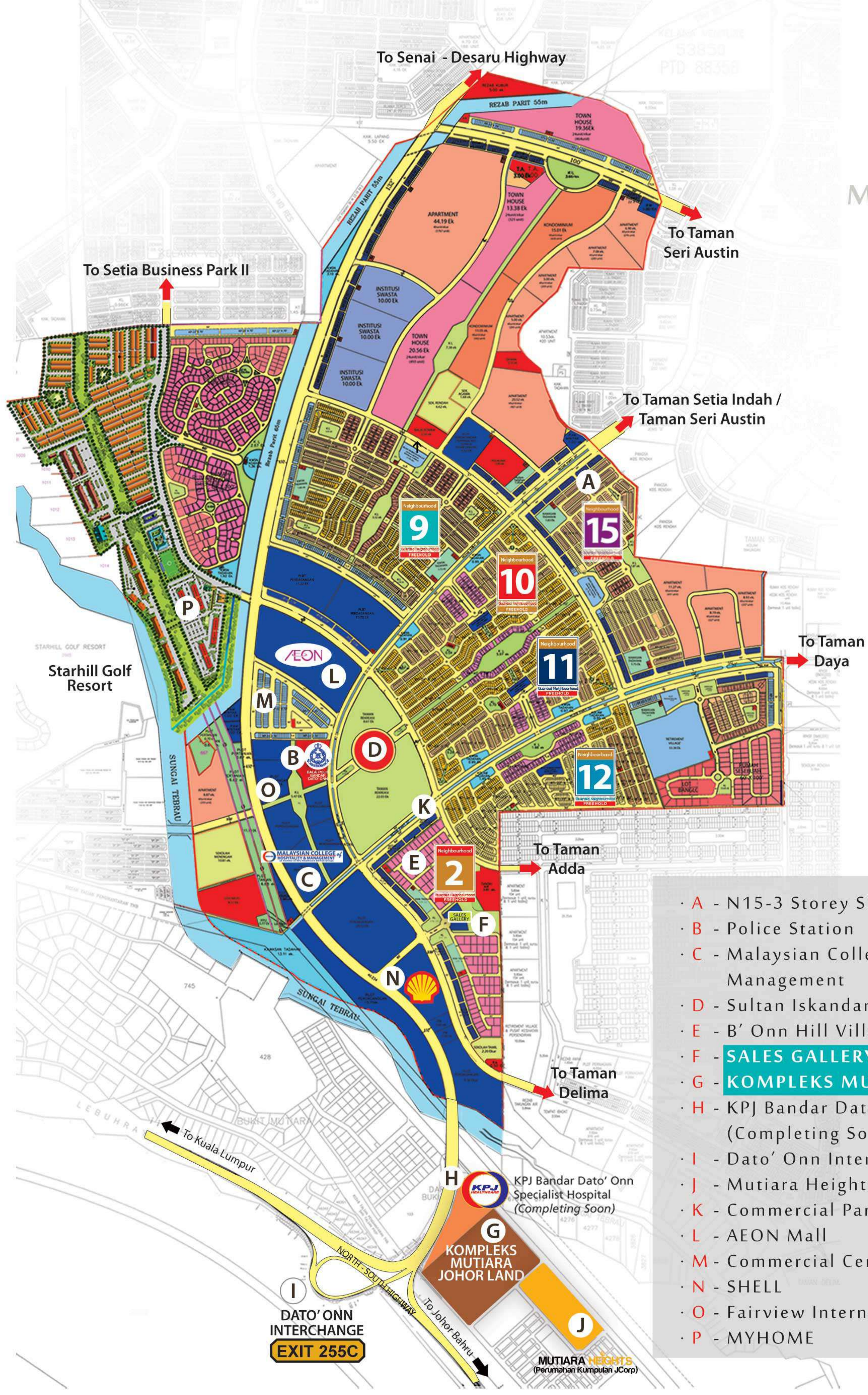
Front & Front Side Fencing	Cement Brick with Mild Steel Grille
Rear Side Fencing	Cement Brick with Mild Steel Grille
Rear	Cement Brick
Front & Rear Gate Door	Steel

TURFING

GAS PIPING

Included

NIL



- A - N15-3 Storey Shop Office
- B - Police Station
- C - Malaysian College of Hospitality & Management
- D - Sultan Iskandar Mosque
- E - B' Onn Hill Villas Exclusive Bungalow
- F - SALES GALLERY
- G - KOMPLEKS MUTIARA JOHOR LAND
- H - KPJ Bandar Dato' Onn Specialist Hospital (Completing Soon)
- I - Dato' Onn Interchange
- J - Mutiara Heights
- K - Commercial Park
- L - AEON Mall
- M - Commercial Centre
- N - SHELL
- O - Fairview International School
- P - MYHOME





JLAND

<p>Main Office : Kompleks Mutiara Johor Land, Jalan Bukit Mutiara, Bandar Dato' Onn, 81100 Johor Bahru. Tel : (07) 3564 888 Fax : (07) 3564 889</p>	<p>Sales Gallery : No. 2, Jalan Perjiranan 2/1, Perjiranan 2, Bandar Dato' Onn, 81100, Johor Bahru. Tel : (07) 360 2692 Fax : (07) 360 2693</p>
---	---

· No. Lesen Pemaju: 8918-37/01-2020/75(L). · No Permit Iklan & Jualan: 8918-37/01-2020/75(P) · Tempoh Sah: 2 Tahun Dari: 19/01/2018 hingga 18/01/2020. · Pegangan Tanah: Hakmilik kekal. · Bebanan Tanah: Tiada. · Pihak Berkuasa yang Meluluskan: Majlis Bandaraya Johor Bahru · No. Pelan Bangunan (HIA): MJB/B/U/2016/14/BGN/81(14) · No. Pelan Bangunan (RAZIN): MJB/B/U/2016/14/BGN/83(13) · Jenis Rumah 1: Rumah Teres 2 Tingkat (AMELIA 1) : Luas Binaan: 1,742kp, Luas Tanah: 1,400kp, Jumlah Unit: 24 unit, Harga Min: RM765,000 – Max: RM1,195,500 · Jenis Rumah 2: Rumah Teres 2 Tingkat (AMELIA 2) : Luas Binaan: 1,744kp, Luas Tanah: 1,400kp, Jumlah Unit: 92 unit, Harga Min: RM765,000 – Max: RM1,097,100 · Jenis Rumah 3: Rumah Teres 2 Tingkat (CLOVER 1): Luas Binaan: 2,073kp, Luas Tanah: 1,680kp, Jumlah Unit: 65 unit, Harga Min: RM950,000 – Max: RM1,327,100 · Jenis Rumah 4: Rumah Teres 2 Tingkat (CLOVER 2) : Luas Binaan: 2,124kp, Luas Tanah: 1,680kp, Jumlah Unit: 31 unit, Harga Min: RM1,045,000 – Max: RM1,438,100 · Jenis Rumah 5: Rumah Berkembar 2 Tingkat (EVELYN 1) : Luas Binaan: 3,245kp, Luas Tanah: 3200kp, Jumlah Unit: 6 unit, Harga Min: RM1,768,500 – Max: RM1,948,800 · Diskaun 15% untuk Bumiputera. · Tarikh dijangka siap: Januari 2020 · Pemaju : JOHOR LAND BERHAD, Alamat Pemaju : Kompleks Mutiara Johor Land, Jalan Bukit Mutiara, Bandar Dato' Onn 81100, Johor Bahru. No Tel :07-360 2692. · Sekatan Kepentingan: Tanah yang terkandung di dalam hakmilik ini tidak boleh dijual atau dipindahmilik dengan apacara sekalipun kepada Bukan Warganegara/Syarikat Asing tanpa persetujuan Pihak Berkuasa Negeri.

07 360 2692